

The background image shows a park setting with several tall, slender trees in the upper half. The lower half features a paved area, likely a skate park, with a concrete ramp and a metal handrail. The entire image has a green color overlay.

CASSY LIVES SKATE PARK PROJECT

DRAFT CONCEPT DESIGN REPORT

GLADSTONE REGIONAL COUNCIL

17 JULY 2020

CONVIC

PREPARED BY

CONVIC

FOR



QUALITY INFORMATION

PROJECT NAME CASSY LIVES SKATE PARK PROJECT
PROJECT NO. 20035
PREPARED BY Matthew Popek
REVIEWED BY Bryce Hinton

ACKNOWLEDGEMENTS

CONVIC Pty Ltd. Acknowledge the contributions of all those who participated in the pre-design consultation for the Cassy Lives Skate Park, including the Gladstone Regional Council staff and residents, community groups and other stakeholders who responded to the various opportunities for input and/or who provided advice and information where required.

CONTENTS

PAGE

01	Introduction	03
02	Background	04
03	Community Consultation	06
04	Conceptual Ideation	07
05	Design Proposals	09
06	Palettes	15
07	Next Steps	16

REVISION HISTORY

REVISION	REVISION DATE	DETAILS	AUTHORISED	
			NAME / POSITION	SIGNATURE
A	17.07.2020	REVISION A	BRYCE HINTON /DESIGN MANAGER	

© CONVIC Pty Ltd. All rights reserved.

CONVIC has prepared this document for the sole use of the Client and for a specific purpose, each as expressly stated in the document. No other party should rely on this document without the prior written consent of CONVIC. CONVIC undertakes no duty, nor accepts any responsibility, to any third party who may rely upon or use this document. This document has been prepared based on the Client's description of its requirements and CONVIC's experience, having regard to assumptions that CONVIC can reasonably be expected to make in accordance with sound professional principles. CONVIC may also have relied upon information provided by the Client and other third parties to prepare this document, some of which may not have been verified. Subject to the above conditions, this document may be transmitted, reproduced or disseminated only in its entirety.

01

INTRODUCTION

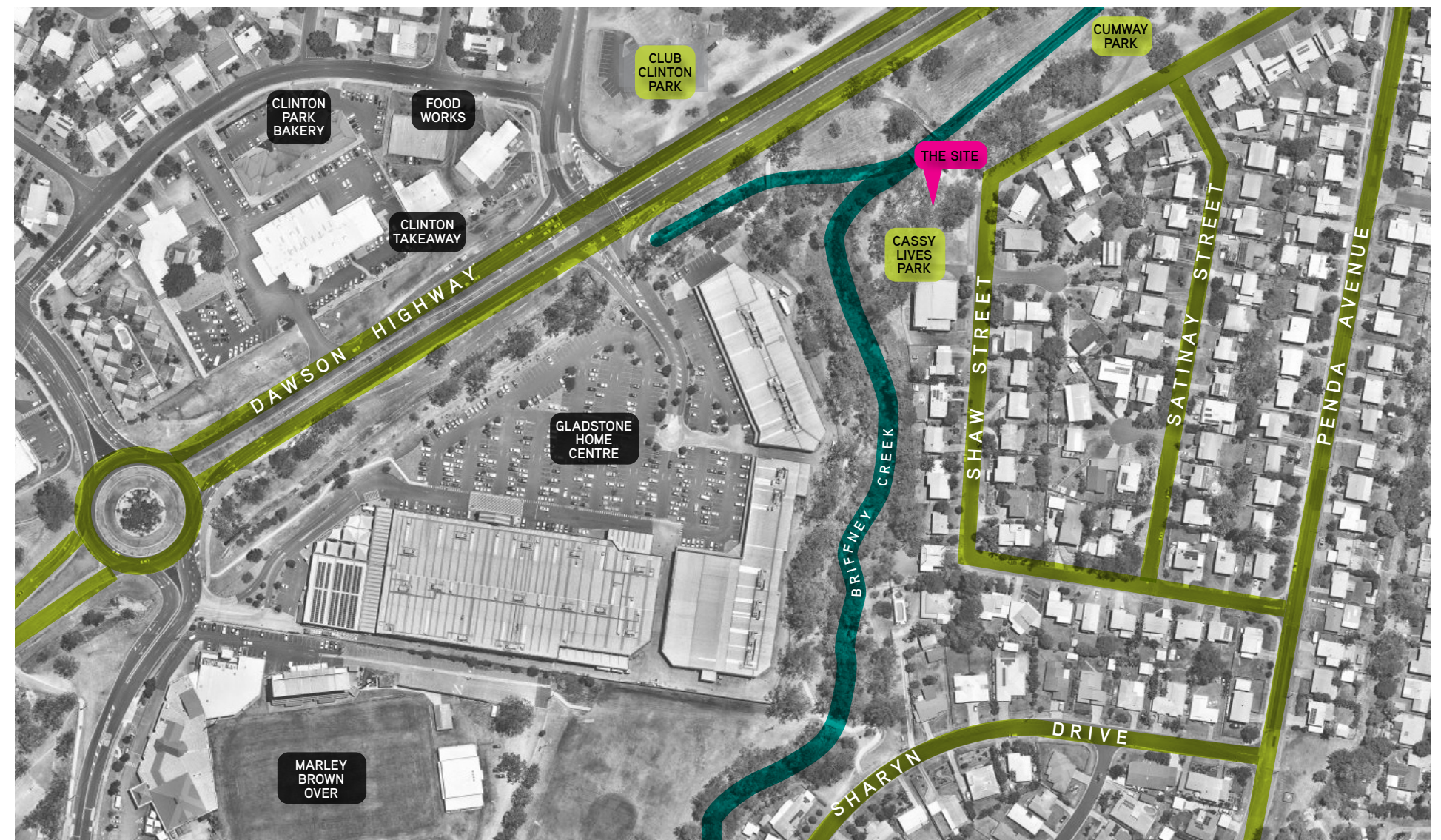
UNDERSTANDING SITE CONTEXT

The Gladstone Regional Council are proposing a new local scale skate park to replace the existing Cassy Lives Skate Park facility. The redevelopment of the skate park will enhance the Cassy Lives Park and create an active recreation and community space forming a key destination for the youth of the local New Auckland area.

The proposed location sits in place of the current skate park and is located in the south west corner of the Cassy Lives Park. The site sits on the southern side of Briffney Creek. Cassy Lives Park is centrally located amongst three other parks. These parks include Sharyn Park in the south, Club Clinton park in the north and Cumway park to the north east. The public open space have strong pedestrian connections through the creek corridor. The development of the existing skate park provides opportunity to form a highly activated recreation pod at a key junction within access paths to the surrounding open space and parklands.

The development of the existing skate park provides an opportunity for the Gladstone Regional Council to upgrade the existing under utilised youth space and provide a contemporary skate park that meets current industry trends. The public youth space is easily accessible to locals through alternative means of transport such as foot, bicycle, skate and scooter traffic. The space will be available to all demographics and provides opportunity to lift the public profile of the youth in the local suburb.

With the existing site features, the facility will create a dynamic and activated youth space within a natural landscape setting offering recreational and social experiences for all members of the community. The design of the facility will form a part of the network of active recreation spaces within the Gladstone regional Council municipality.



EXISTING SKATE PARK - PHOTO STUDY

In the place of a site visit due to travel COVID-19 travel restrictions, Convic took part in a video conference call which allowed Council to provide a live tour of the site. Council also supplied Convic with a range of site photos that were reviewed and the following recommendations can be provided:

- Existing concrete skate ramps are in poor condition and provide little or outdated functionality and should be demolished.
- The current bitumen skate surface is rough and in poor condition which many users, particularly those with smaller wheels find difficult to ride on and maintain speed. This in turn increases the risk of more severe injuries. This should be demolished and replaced with concrete.
- The steel 'mini ramp' is popular with the local community and is ok condition, however can be loud when in use. Further to this, the existing slab beneath it is in good condition and bridges a part of the site with poor ground conditions. The slab should be retained and an option to maintain the mini ramp should also be provided.
- A manhole cover and connecting sewer pipes are located in the centre of the site, access needs to be maintained to the manhole and only simplistic concrete features such as flat slabs should be proposed over the pipes.
- There are a number of trees on site, which provide good natural shade and a unique characteristic for the space. The design should look to retain as many of the existing trees as possible, there are no known TPZs for any of the trees on site.
- Supporting amenity is limited, however the planter beds around the entrance to the site provide a good buffer from the adjacent road and pavement and as such should be retained.
- Access to the facility is only available at the eastern side of the park onto Shaw Street. The design needs to consider how to enhance this connection and make it as open and inviting as possible.

The above design considerations and constraints have been discussed with Council prior to the completion of this report.



1. Skatepark entrance & mini ramp
2. Pedestrian access adjacent to skatepark
3. Central mature tree species
4. Existing services within skate park footprint
5. Central mature tree species
6. View across skate park from mini ramp
7. View across skatepark towards Briffney Creek
8. Adjacent vacant land & southern property

EXISTING SKATE CONTEXT

In order to determine the style of facility proposed for the Cassy Lives Skate Park it is first important to undertake a study of skate facilities within a close proximity to the proposed development to identify their style and where gaps in provision exist. Skate facilities consist of three distinct style: Plaza, Transition and Combination.

This study has identified that the region consists of a mixture of all style parks. With the exception of the recently redeveloped Bray Park Skate Park, many of the existing facilities are mainly old-style skate parks which are not in keeping with current skate trends and in need of updating in some cases repair.

With this in mind, and in keeping with the results from user consultation as well as designing to the site conditions, it is advised that a combination style facility will be best suited for the Cassy Lives Skatepark. Flow and plaza style areas will provide a range of features for all styles and abilities, with a preference to beginner and intermediate level riders. This will create a local skate park with original and interesting obstacles that compliments the existing network of skateparks.



THE CASSY LIVES SKATEPARK WILL BE AN INVITING, FAMILY FRIENDLY SPACE THAT CELEBRATES THE LIFE OF CASSY AND DRAWS INSPIRATION FROM THE UNIQUE CONTEXTUAL SETTING OF GLADSTONE. IT WILL CATER FOR ALL DISCIPLINES AND SKILL LEVELS AND BE A STAND OUT DESTINATION WITHIN GLADSTONE'S SKATE PARK NETWORK.

THE REDEVELOPMENT OF THE FACILITY WILL CREATE A SAFE AND ACTIVE SPACE FOR THE COMMUNITY FOSTERING SOCIAL INTERACTIONS AND PROVIDING NON-TRADITIONAL ACTIVE RECREATION OPPORTUNITIES.

CONSULTATION SUMMARY

The design consultation outcomes have been summarised to inform a community driven design brief for the Cassy Lives Skatepark. The community brief will be used in conjunction with councils brief to inform design decisions and actions. These are all outlined thematically and will be used as the foundation for the development of the concept design.

TARGET USER GROUP

The community workshop feedback has highlighted BMX riders as the majority user style. It will however, cater to all user groups including those participating in skateboarding, scooter riders, roller skating and all other active wheeled sport disciplines, as well as those non-active participants looking to spectate and socialise.

SKILL LEVEL PROVISION

There was a relatively even spread of responses from both beginner and intermediate skill levels, however advanced level users also provided feedback. The design will predominantly cater toward beginner to intermediate skill levels, however it is key to provide for skill progression within the facility. This will allow for beginner users and future generations to learn and continue to develop their skills up to an advanced ability and for advanced users to continue to be challenged.

SKATE TYPOLOGY

A mix of both transition and street style elements was indicated as preferred features by participants. The feedback focused on a variety of transition elements such as spines, various height quarter pipes and keeping the existing mini ramp. A number of participants preferred to see the inclusion of street features as well including a flat bar, hubbas and ledges and a small stair set.

SKATE VISION

Through the feedback obtained by the Gladstone Regional Council, Convic can recommend that the proposed design for the skatepark should be a combination style facility should predominately consisting of both transition and street skate styles. The shared vision amongst participants was to see this skate park integrate with the surroundings and help create a community hub for both youth and local families.

USER + SPECTATOR AMENITIES

To ensure a central community space that can be used by a variety of different user groups, the facility will offer a number of social opportunities. The provision for areas of refuge and shade throughout the day is to be considered, whether purpose built or looking to utilise natural shade. Many highlighted the need for breakout spaces to allow for social hangout zones and spectating areas, this will be considered when developing the concept design. There was strong voting to include additional landscaping within the design as well as furniture items such as bike racks and a water bubbler.

A number of comments were made about the safety of the existing facility with feedback provided outlining that young people do not feel safe while using the facility. The renewal of the skate park will inherently create a safer environment for end users while CPTED principles will be adopted throughout the design process to enhance passive surveillance into and out of the new skatepark.

ICONIC ELEMENTS + LOCAL IDENTITY

To celebrate Gladstone and give the skatepark its own identity the design should reflect its unique contextual setting and the life of Cassy Jones. The aesthetic of the facility will celebrate Cassy's personality through the use of colour and provide local riders with a sense of ownership over the new facility providing a safe and enjoyable public youth space.

04

CONCEPTUAL IDEATION

THEMING

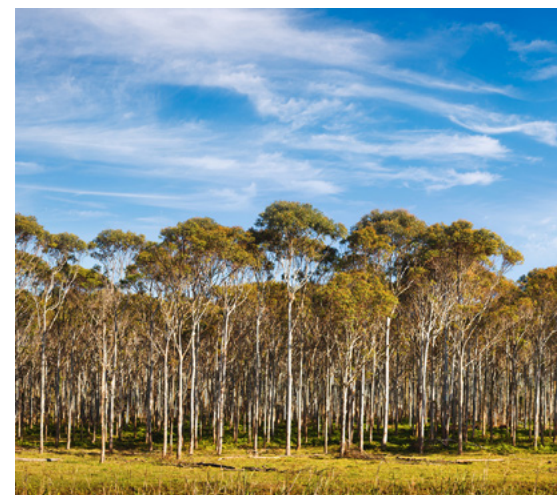
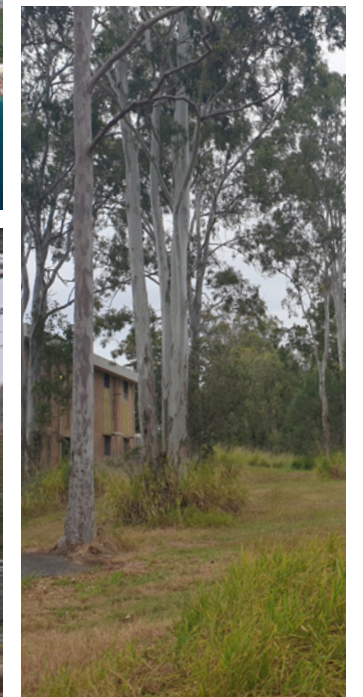
A popular comment from both users of the space and nearby residents throughout the consultation process was to keep the existing trees to provide natural shade but also help encourage a more natural context and maintain the current natural character of the space. Street art and graffiti was also a popular response.

However, the community consultation process is yet to directly ask participants for ideas and references about how we can create an identity for the space that is unique and influenced by the local area, allowing it to become an iconic destination unlike any others in the area.

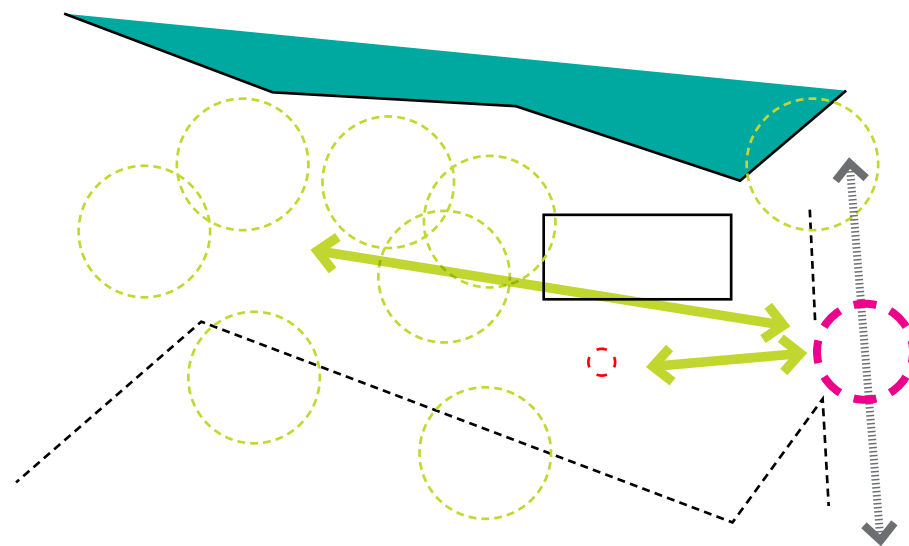
As such we have carried out research into the area and themes have been introduced to celebrate the unique natural surrounds of the Gladstone region. Further to this, the design intent will celebrate the life of Cassy through art, colours and materiality.

Natural earthy tones, green relief and vibrant highlights will define a unique, eye catching theme and encourage youth and families to enter the space and take pride in the appearance and feel of the facility.

These themes will be explored further at the next round of community consultation where participants will be asked to provide ideas and feedback on how to better define the character and appearance of the space. This will allow further activation of the site and create a unique aesthetic that reflects the local area and gives the facility an individual appearance that sets it apart from others in the area and encourages a sense of ownership from the community.



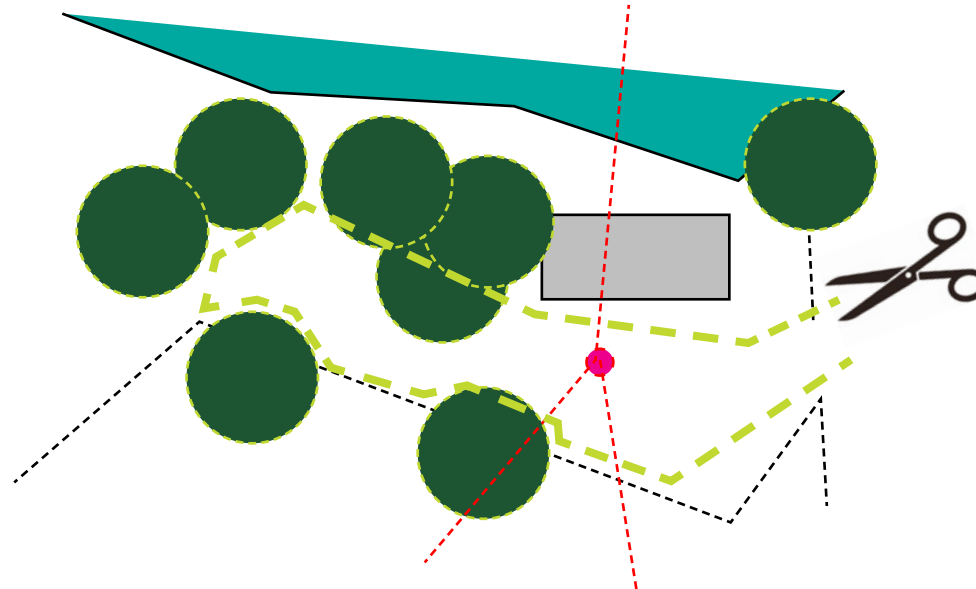
CONCEPTUAL DEVELOPMENT



IMPROVED ACCESS & CONNECTIVITY

With only one point of access at the east of the facility, the design of the Cassy Lives Skate Park will encourage additional pedestrian connections into the facility, open up the existing point of entry and looks to enhance circulation through the whole site in a safe and logical system by creating key destinations and stand alone seating areas.

In addition to this the design of the skate park will look to build on the existing connections outside of the site to the surrounding footpaths and infrastructure such as the bridge over Briffney Creek and adjacent off road parking on Shaw Street. .

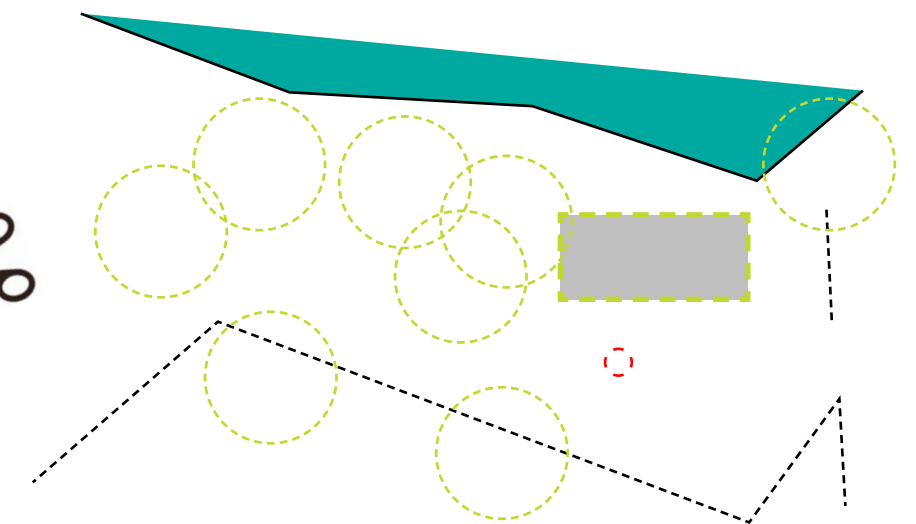


EXISTING SITE FEATURES AND CONSTRAINTS

Bordered by a residential fence line to the south, the embankment leading down to Briffney Creek on the North, dense vegetation to the west and Shaw Street to the East it is important to provide buffer spaces which help indicate the boundary of the youth space and start of these adjacent features.

There are several constraints that need to be considered throughout the design process within the site also, including the existing trees, sewer lines and manhole cover and the steel mini ramp with concrete slab.

An innovative design response will work around these features and constraints to create a unique and functional layout.



UTILISING EXISTING SKATE INFRASTRUCTURE

During pre-design consultation the community expressed their desire to keep the existing steel mini ramp. To maximise the size of the skate park redevelopment and meet the community requirements the mini ramp and existing slab have been incorporated into the design concept options. This methodology enables the construction of a new facility without the need for the budget to allocate funds toward demolition or removal costs.

Utilising and incorporating the existing entrance space and garden beds into the design saves additional costs and builds on the existing natural context character.

05

DRAFT DESIGN CONCEPT 01 - OVERVIEW

LEGEND

OPTION 1

FACILITY DESCRIPTION: This design option explores a combination of transition and street features. At one end; open and flowing beginner to intermediate level transitions with hips, a volcano, mogul and a spine connection to the existing steel mini ramp. At the other end a simple linear street section with painted kerb manual pad, flat bar and standalone whippy quarter pipe which all provides a connection to the entrance area. Both areas have platform viewing + spectator spaces and concrete seating, and the street section has a rubbish bin and drinking fountain also.

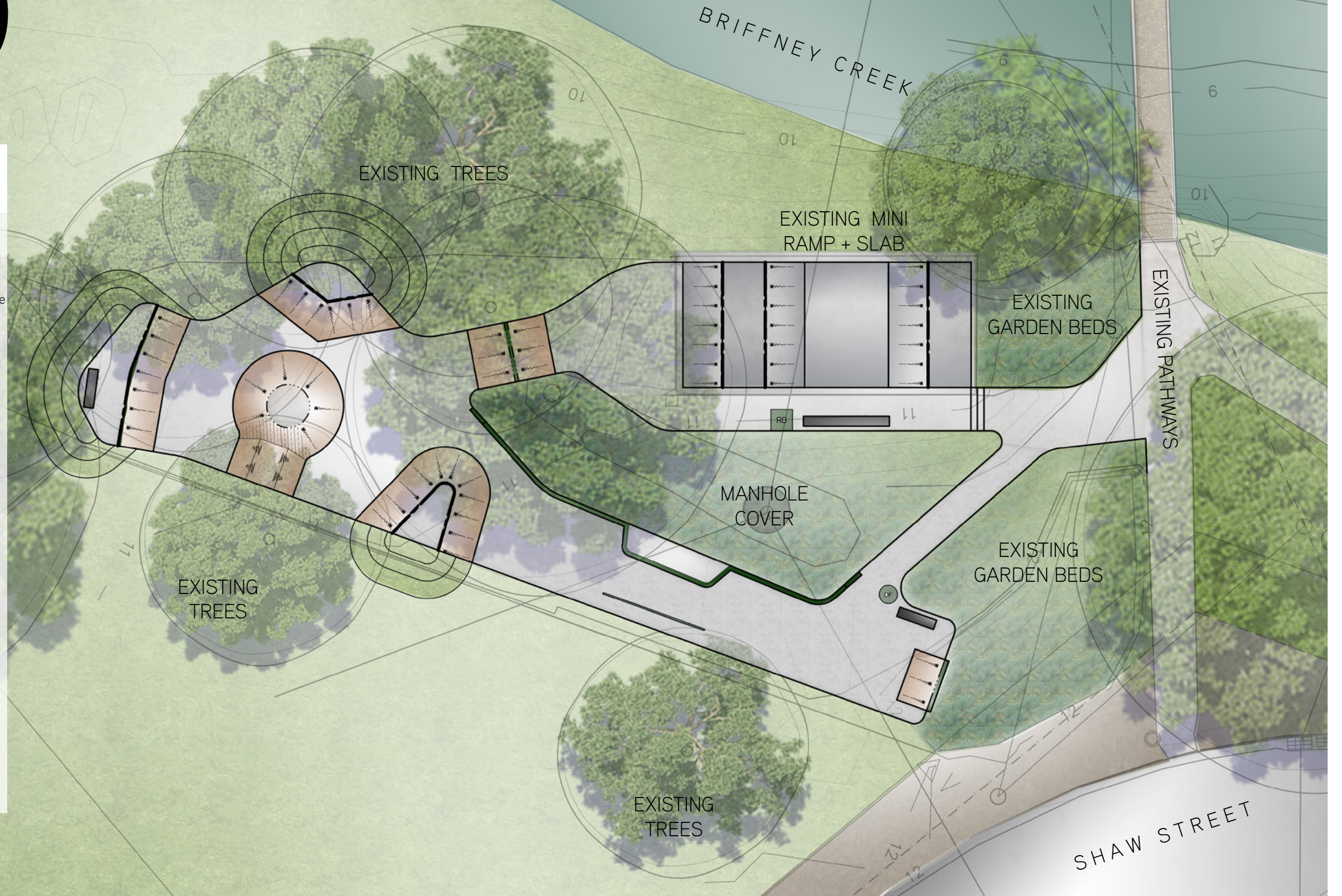
TRANSITION: 60%
STREET: 40%

PROS:

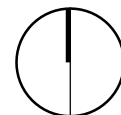
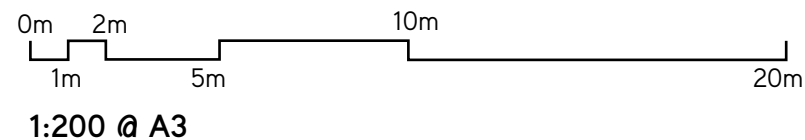
- A mix of provision
- All existing trees retained
- Maintain existing mini ramp
- Compliments existing nearby skate park network
- Unique form and appearance

CONS:

- Divided overall flow on busier days
- Medium footprint area
- Separate connection to entrance node
- Lack of advanced level features



CLIENT



CONVIC

ADDRESS

Unit 13, 46-50 Regent Street
Richmond VIC 3121
T (03) 9486 9899
convic.com

PROJECT

Cassidy Lives Skate Park

TITLE

Draft Concept Plan

DATE

17.07.2020

REVISION

01

DRAFT DESIGN CONCEPT 01 - PLAN

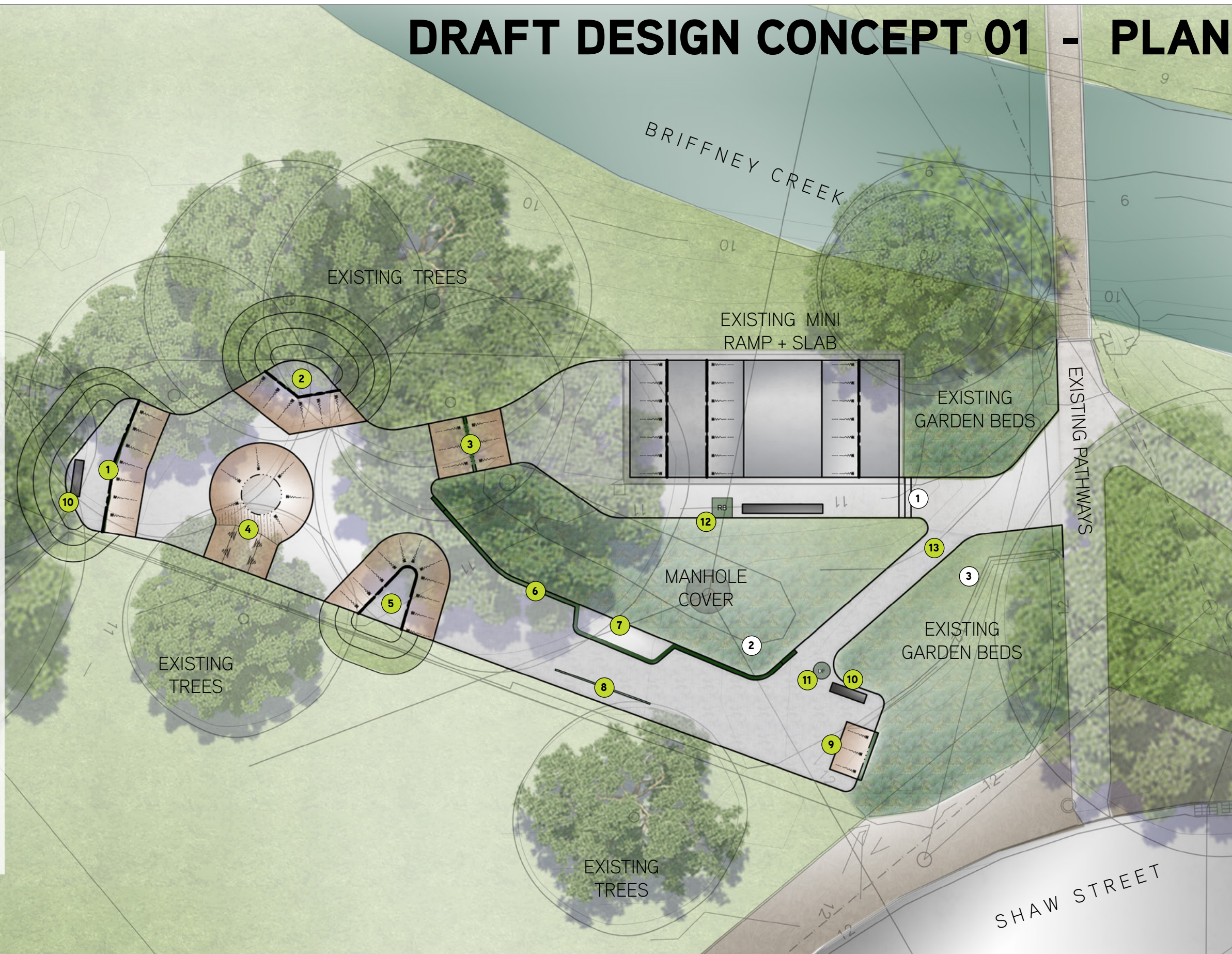
LEGEND

SKATE WORKS

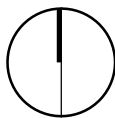
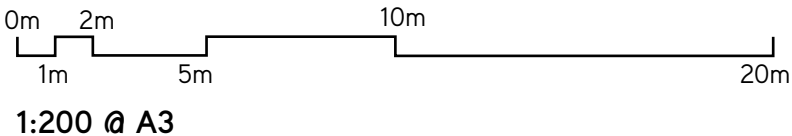
- 1 1000H Curved Quarter Pipe
- 2 1200H Quarter Pipe Hip
- 3 900H Spine Ramp
- 4 900H Volcano with Mogul
- 5 1000H Quarter Pipe + Hip
- 6 Painted Slappy Kerb
- 7 200H Manual Pad
- 8 350H Flat Bar
- 9 900H Whippy Quarter Pipe
- 10 Concrete Seating
- 11 Drinks fountain
- 12 Rubbish Bin
- 13 Footpath

ADDITIONAL WORKS (BY OTHERS)

- 1 Additional Entry Path
- 2 Refurbished Central Area
- 3 Extended Garden Beds



CLIENT



CONVIC

ADDRESS

Unit 13, 46-50 Regent Street
Richmond VIC 3121
T (03) 9486 9899
convic.com

PROJECT

Cassy Lives Skate Park

TITLE

Draft Concept Plan

DATE

17.07.2020

REVISION

01

DRAFT DESIGN CONCEPT 02 - OVERVIEW

LEGEND

OPTION 2

FACILITY DESCRIPTION: This design option aims to mimic a 'real urban plaza' to complement the style of the existing facilities in the area and the retained steel mini ramp. The design provides areas of flat open space with technical street features appealing to all skill levels and demographics. This skate park style reflects community feedback provided by Council for a different style of facility from those currently on offer in the area and is more in line with current skate trends. Ledges, stair sets, rails, unique hump bridge with rail, kerbs, kickers, banks and a quarter pipe link together from the entrance area to provide long flowing lines which can be linked to the steel mini ramp and entrance area. Spectator spaces and seating areas are provided throughout, and a rubbish bin and drinking fountain are also included within the space.

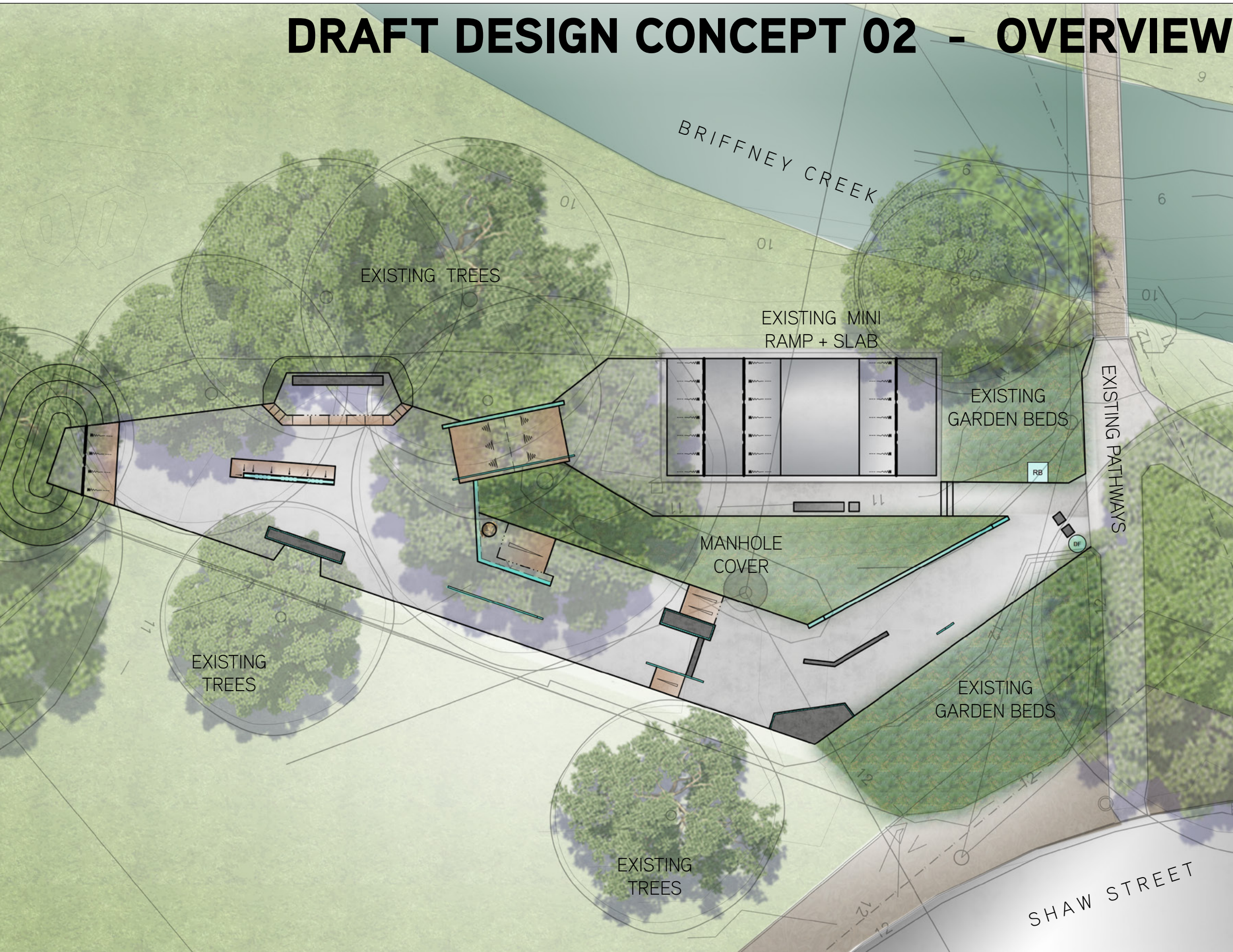
TRANSITION: 10%
STREET: 90%

PROS:

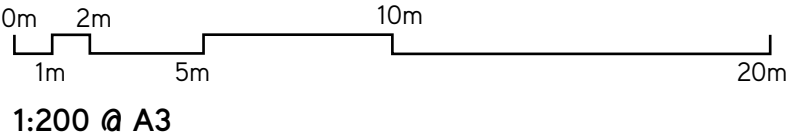
- Only modern street focused park/ plaza in the region with unique form and function
- All existing trees retained
- Maintain existing mini ramp
- Best compliments existing nearby skate park network
- Largest footprint area
- Open flow that can cater for higher number of users at one time

CONS:

- Limited inclusion of new transition features
- Predominately one style of skate
- Less organic layout shape



CLIENT



CONVIC

ADDRESS

Unit 13, 46-50 Regent Street
Richmond VIC 3121
T (03) 9486 9899
convic.com

PROJECT

Cassy Lives Skate Park

TITLE

Draft Concept Plan

DATE

17.07.2020

REVISION

01

DRAFT DESIGN CONCEPT 02 - PLAN

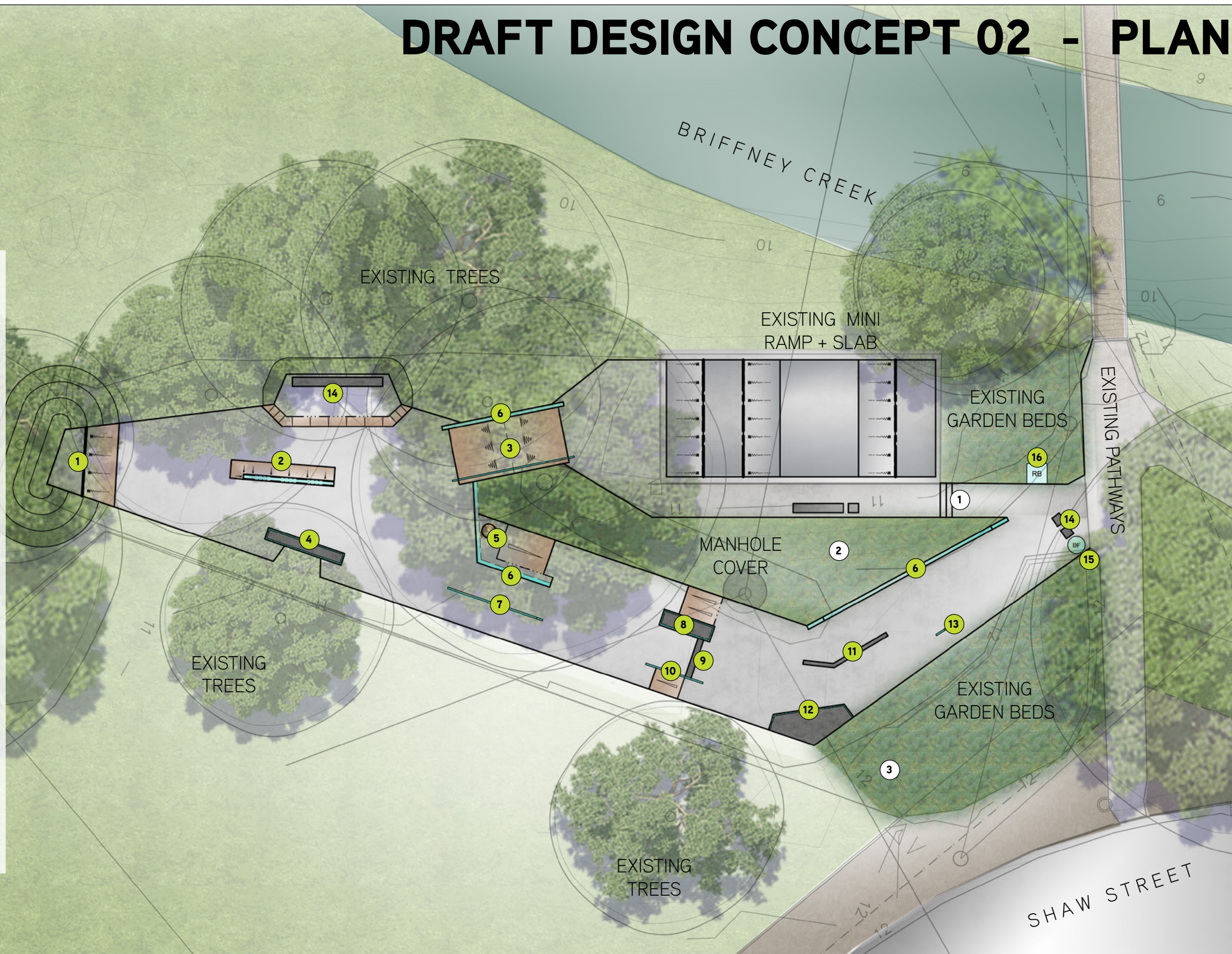
LEGEND

SKATE WORKS

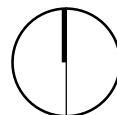
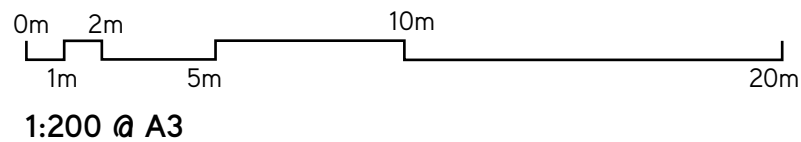
- 1 1000H Quarter Pipe
- 2 450H Spine Slider
- 3 Hump Bridge with Rail
- 4 300H Flat Ledge
- 5 Kicker over Rock Gap
- 6 Painted Slappy Kerb
- 7 350H Flat Bar
- 8 Wide Hubba Ledge
- 9 Small Stair Set
- 10 Down Rail
- 11 Kinked Slider Ledge
- 12 Corner Ledge
- 13 Pole Jam
- 14 Concrete Seating
- 15 Drinks Fountain
- 16 Rubbish Bin

ADDITIONAL WORKS (BY OTHERS)

- 1 Additional Entry Path
- 2 Refurbished Central Area
- 3 Extended Garden Beds



CLIENT



CONVIC

ADDRESS

Unit 13, 46-50 Regent Street
Richmond VIC 3121
T (03) 9486 9899
convic.com

PROJECT

Cassy Lives Skate Park

TITLE

Draft Concept Plan

DATE

17.07.2020

REVISION

01

DRAFT DESIGN CONCEPT 03 - OVERVIEW

LEGEND

OPTION 3

FACILITY DESCRIPTION: An open style transition park, this design is similar in inclusions to others in the region but provides a more low level beginner to intermediate provision, with a few features included to allow progression and appeal to those already at an advanced level of riding. The design includes areas of flowing transitions that can be linked together in a looping fashion with hips, spines, extensions, volcano and moguls. This skate park style reflects the community feedback provided by Council for more traditional features they enjoy riding at nearby parks like the PCYC facility. These features are also of a similar style to the existing mini ramp and as such it is proposed for removal in this option and will be replaced with a community arts and hangout area utilising the existing slab. Spectator spaces and seating areas are centred around terraces in the centre of the space where a rubbish bin and drinking fountain are also included.

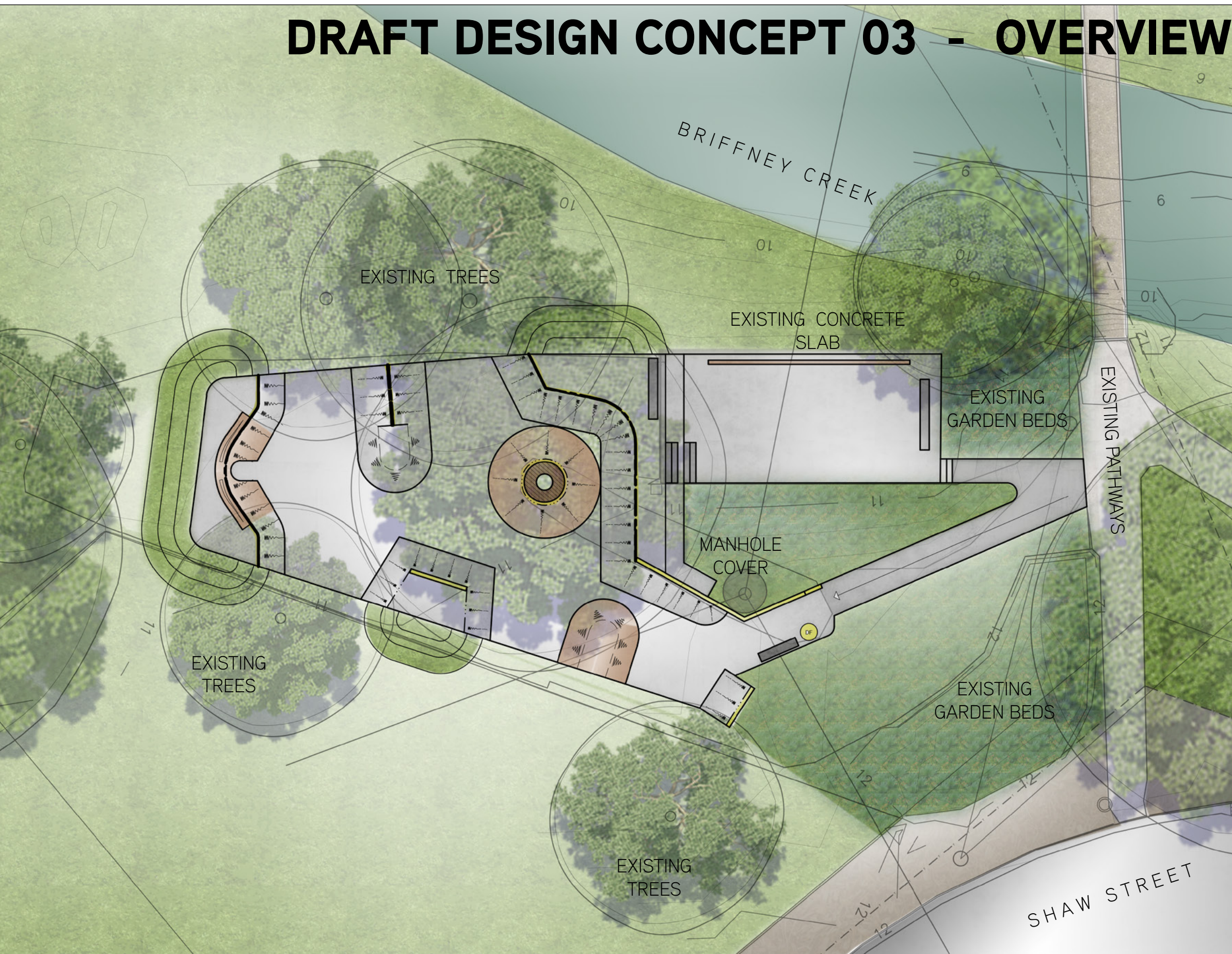
TRANSITION: 90%
STREET: 10%

PROS:

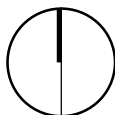
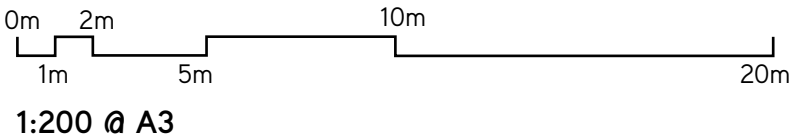
- Varied inclusion of transition style features
- Utilise existing concrete slab for a more mixed use community area
- Maintain existing mini ramp
- Large platforms allow good standing and viewing spaces
- Unique volcano tree feature

CONS:

- Limited inclusion of street features
- Predominately one style of skate
- Faster more open flow which limits the number of users at any one time
- Smallest footprint area



CLIENT



CONVIC

ADDRESS

Unit 13, 46-50 Regent Street
Richmond VIC 3121
T (03) 9486 9899
convic.com

PROJECT

Cassy Lives Skate Park

TITLE

Draft Concept Plan

DATE

17.07.2020

REVISION

01

DRAFT DESIGN CONCEPT 03 - PLAN

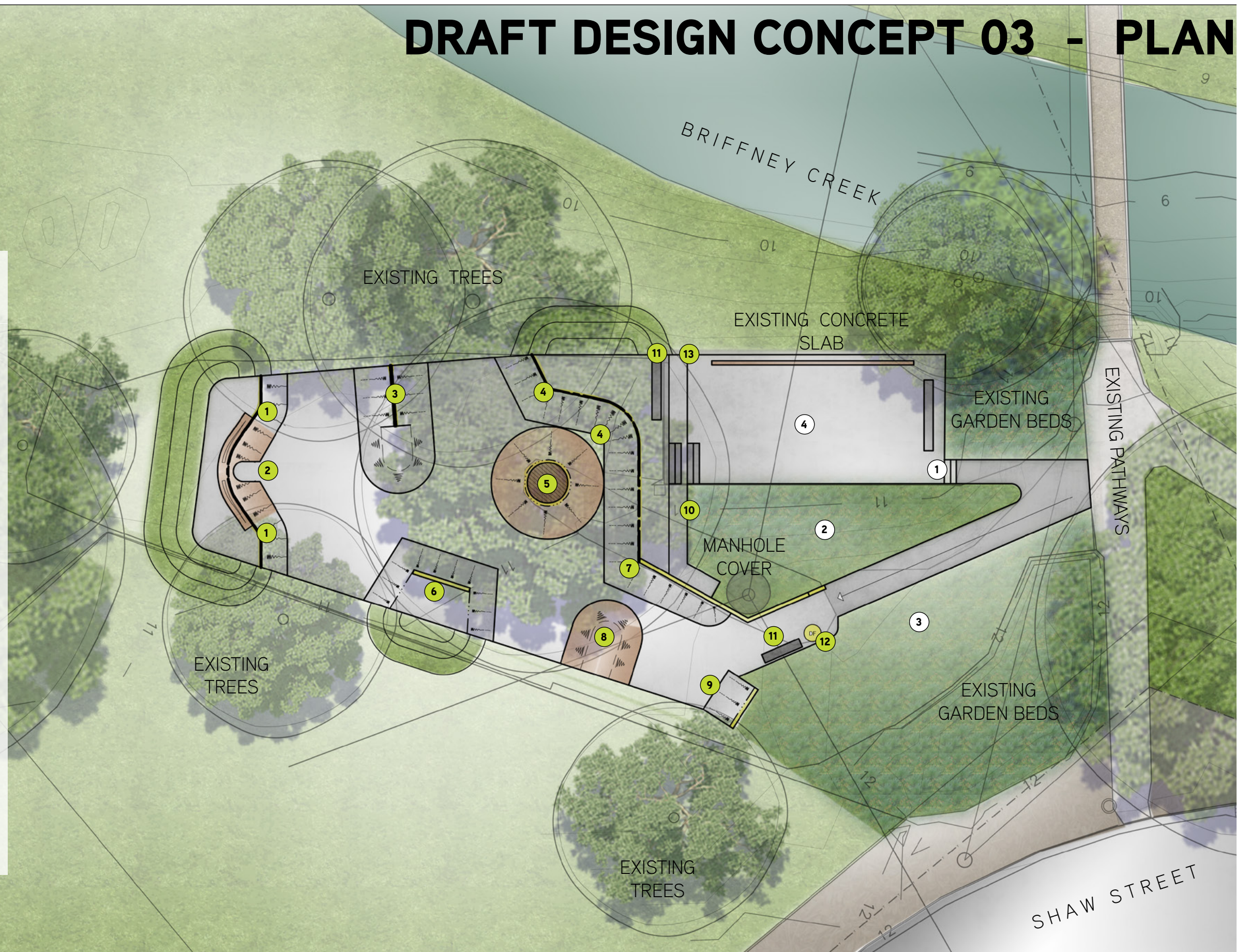
LEGEND

SKATE WORKS

- 1 1000H Quarter Pipe Hips
- 2 1400H Doorway Extension
- 3 900H Spine + Mogul
- 4 1000H Hip + Pocket
- 5 1200H Volcano around Tree
- 6 900H Box with Kerb
- 7 Escalating Hip with kerb
- 8 450H Mogul
- 9 1800H Quarter Pipe Ext
- 10 Concrete Terracing
- 11 Concrete Seating
- 12 Drinks Fountain
- 13 Rubbish Bin

ADDITIONAL WORKS (BY OTHERS)

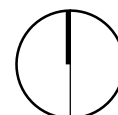
- 1 Additional Entry Path
- 2 Refurbished Central Area
- 3 Extended Garden Beds
- 4 Proposed Community Arts area with Graffiti Wall



CLIENT



0m 2m 10m 20m
1m 5m
1:200 @ A3



CONVIC

ADDRESS

Unit 13, 46-50 Regent Street
Richmond VIC 3121
T (03) 9486 9899
convic.com

PROJECT

Cassy Lives Skate Park

TITLE

Draft Concept Plan

DATE

17.07.2020

REVISION

01

06

PALETTES - MATERIALS

SKATE REFERENCE IMAGES

Skate obstacles have been designed to create a unique rider experience with features that are multifunctional and can be used a variety of ways.

1. Spine Ramp & Mogul
2. Painted Kerbs
3. Plaza Stairs, Hubbas and Rails
4. Volcano & Quarter Pipe Doorway
5. Spectator Seating

COLOUR PALETTE

The material pallet has been selected to reflect the unique natural context of the surrounding area and also includes vibrant painted highlights to celebrate the colourful and energetic life of Cassy.



COLOURED CONCRETE SEALER + PAINTED HIGHLIGHTS



07

NEXT STEPS

MOVING FORWARD

Upon review and approval of the draft concept design, the Gladstone Regional Council will undertake the next round of consultation with the community to discuss the draft concept design options. This community engagement phase will provide a full circle approach and provide opportunities for the community to see their initial feedback culminated in a design specific to the site. Additional comment will be sought from the community on the proposed concept design options outlined in this report.

Convic will engender to adopt the comments made by the community and council within the first revision of the detailed design phase. The detailed design documentation will be issued to council for a number of reviews and provide evidence of project progression.



CONVIC

CREATE COMMUNITY

HEAD OFFICE

UNIT 13, 46-50 REGENT STREET
RICHMOND VIC 3121 AUSTRALIA
T +61 3 9486 9899

MELBOURNE | SINGAPORE | DUBAI

CONVIC.COM